



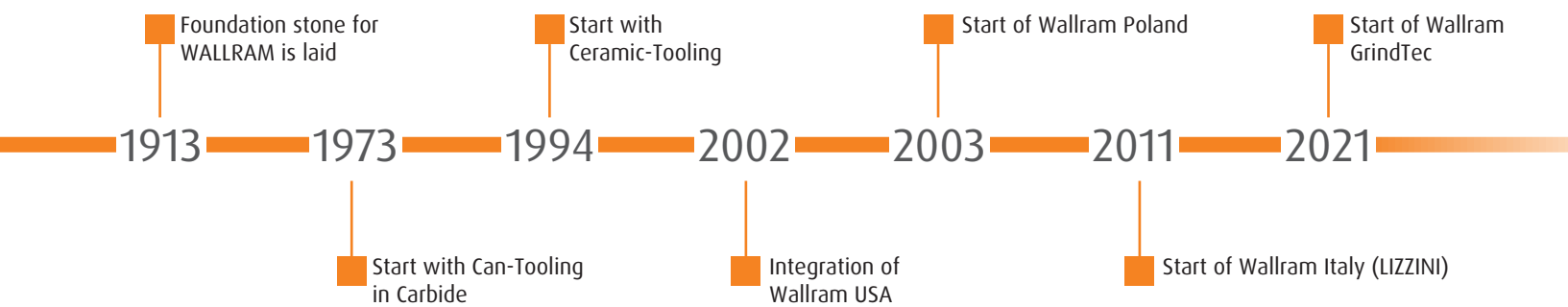
**WALLRAM GROUP**  
SOLUTIONS FOR PROCESS IMPROVEMENT



# WALLRAM GROUP

## SOLUTIONS FOR PROCESS IMPROVEMENT

The WALLRAM Group stands for process improvement solutions for our customers through the use of our tools and machines. The high-quality, particularly precise and low-wear tools are used especially in the metal packaging industry, where high production speeds and special demands on the precision of the forming processes coincide. At the same time, high-quality, customisable CNC cylindrical grinding machines are manufactured for a wide range of applications in the field of internal and external grinding, as well as machines for the wire and cable industry. All our products are characterised by the fact that they decisively and sustainably improve the customers' manufacturing processes.





# REALIZE THE HIGHEST DEMANDS

## TOGETHER SUCCESSFUL

Both the convergence of all competences within the WALLRAM Group and the cooperation with customers and partners are the pillars of our joint success. Within the group, this idea is particularly evident in the exchange between the sites and the merging of mechanical engineering and toolmaking. Here, flat hierarchies and short communication channels lead to continuous improvement. Experience from decades of tradition forms the basis for innovative ideas for the benefit of our customers.

## PROCESS RELIABILITY THROUGH UNCONDITIONAL QUALITY

The highest quality of our products is the basis for efficient and safe processes at our customers. This quality standard is our trademark and non-negotiable. It is the high standards we set ourselves that we pass on to our customers in our products. WALLRAM Group is convinced to meet the requirements of certifications and documented proof of quality. Our customers and partners can expect from us what we demand from ourselves.







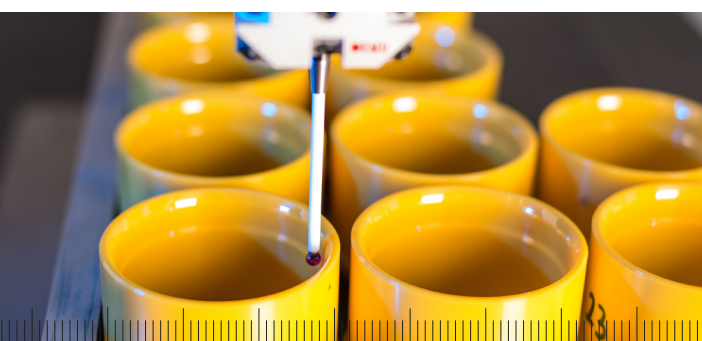
## RELIABLE RELATIONSHIP

### RELIABLE PARTNERSHIP

At WALLRAM, we know that forming a reliable partnership with our customers is essential for the success of our business. That's why we strive to ensure that all our products meet the needs of our customers. We don't compromise in terms of quality, and our products are tested thoroughly before they are released to the public. We understand that our customers are investing in us, and that's why we make sure that our products are of the highest quality. We ensure that our customers are satisfied and that their expectations are met. We want to build a long-term and trusting partnership with our customers, and that's why we take the time to make sure that the products we produce are reliable and meet their standards.

### THINKING IN A CUSTOMER- AND SOLUTION-ORIENTED WAY

As doers, we keep a cool head and focus on solutions. Clearly focused on the requirements of our customers, we always manufacture with the optimum result in mind. We leave nothing to chance: All our actions are based on knowledge and experience following the LEAN-Philosophy. We are always evolving and curious. In the further development of our production processes and products, we always are focused on the customer's success. We are never satisfied with the „status quo“, but develop techniques to improve and optimise process flows, oriented towards market and customer requirements.





# TOOLING WITHOUT COMPROMISE

## EXCEED EXPECTATIONS

Not only to satisfy customers, but to inspire them and exceed their requirements. Knowing the negative effects of compromising on precision and quality, we think and act beyond what is required. We develop ideas and possibilities to further improve our products even before a requirement is brought to us by the customer. In doing so, we are also prepared to break new ground. Getting better and better in terms of quality and precision and only being satisfied when enthusiasm sets in.

## POOLING KNOW-HOW

We bring together the competences in the group to offer our customers engineering for the optimal use of our products. At the same time, we use resources to optimise our product range. In particular, the selection of the best possible materials is one of our core competencies. This is the basis for our exceptional quality.







# WALLRAM GROUP

## WALLRAM GROUP

Wallram Group is an internationally operating group of companies. Our core business is the production of precision tools for metal-forming and cylindrical grinding machines. At our locations in Germany, Poland and USA, we manufacture high-precision tooling mainly for the metal packaging industry. Using primarily the materials tungsten carbide and ceramics, we offer tooling solutions to our customers that provide true added value.

### WALLRAM – Can Tooling & Engineering

## WALLRAM GERMANY

WALLRAM Werkzeugtechnik GmbH  
Schürmannstraße 40  
45136 Essen  
[sales-germany@wallram.com](mailto:sales-germany@wallram.com)

## WALLRAM USA

WALLRAM USA Inc.  
1819 S. Murray Blvd.  
Colorado Springs, CO 80916  
[sales-usa@wallram.com](mailto:sales-usa@wallram.com)

## WALLRAM POLAND

WALLRAM CanTool-Europe Sp.z.o.o.  
Ul. Póllanki 44  
30-740 Kraków  
[sales-poland@wallram.com](mailto:sales-poland@wallram.com)







## A GLOBAL PLAYER

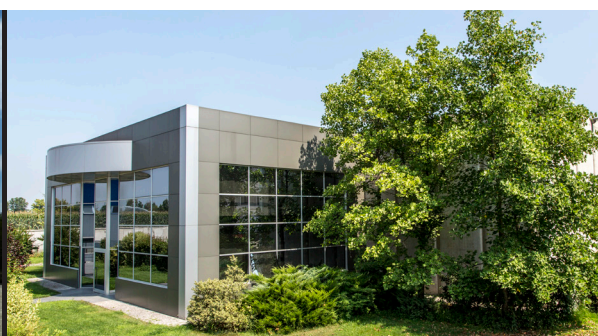
At our plant in Italy, we develop and build innovative CNC- machines for cylindrical grinding for a wide range of industries. Regardless of the production requirement, we can offer bespoke and flexible solutions to our customers. In our German location we offer innovative and high-quality die working machines for the wire and cable industry. **WALLRAM – Intelligent Grinding**

### WALLRAM GRINDTEC ITALY

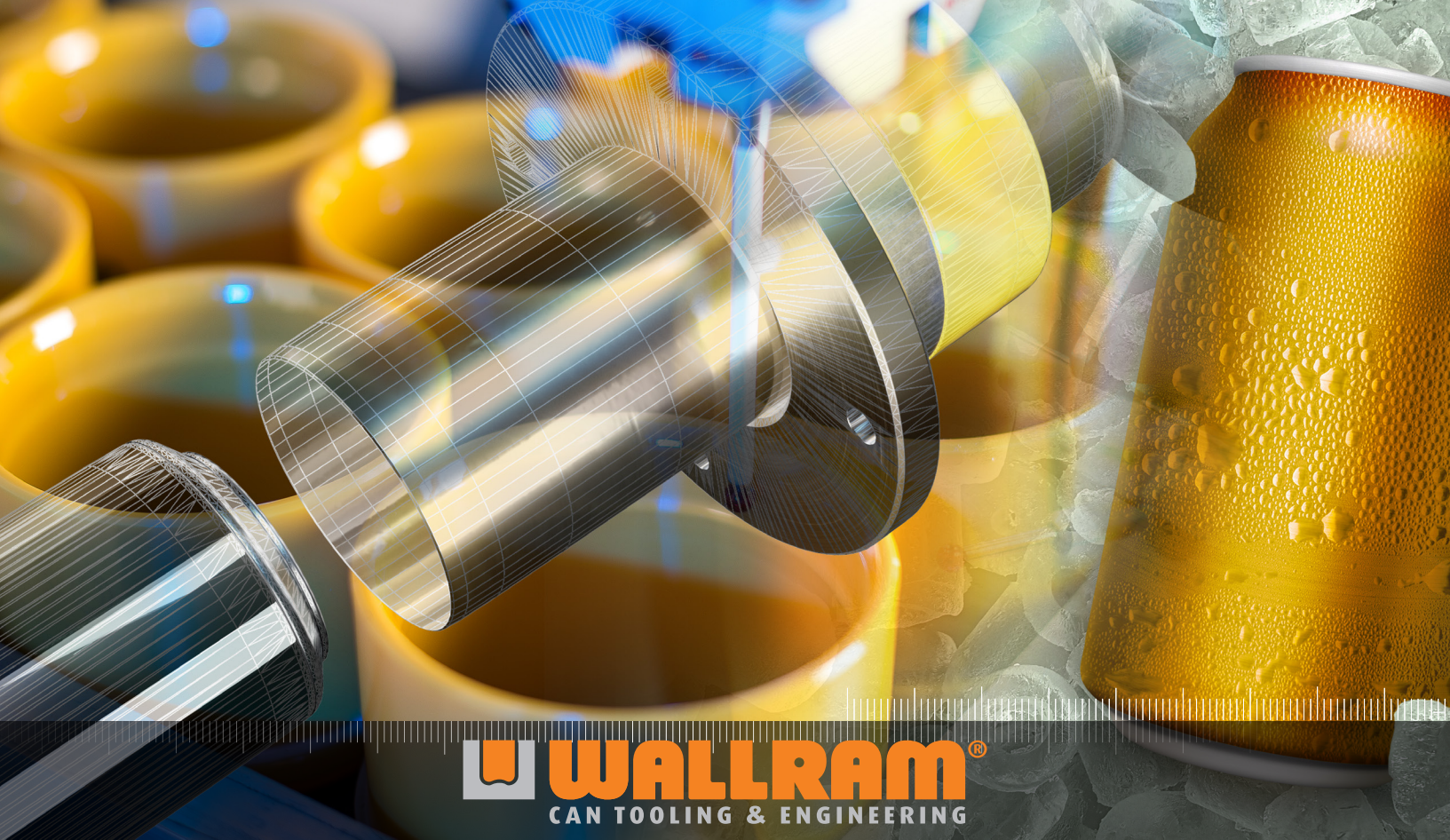
WALLRAM Grindtec srl.  
Via Leonino da Zara, 54  
25018 Montichiari (Brescia)  
[grindtec@wallram.com](mailto:grindtec@wallram.com)

### WALLRAM GRINDTEC GERMANY

WALLRAM GrindTec GmbH  
Herborner Straße 45  
35745 Herborn  
[sales@rkDieGrind.com](mailto:sales@rkDieGrind.com)







## WALLRAM

Can tool applications play an important role in our work. The manufacturing of metal cans is a highly sophisticated process involving coils, lubricants, tools, machines, and sensors that are heavily reliant on each other. The failure of one of these elements can interrupt the entire production process. Thanks to our extensive experience, we can provide competent support to our customers through all phases of can production – from design and development to support and trouble-shooting.









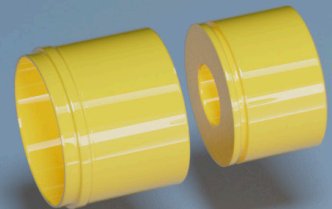
## CAN-TOOLING BY WALLRAM

A large variety of metal packaging is available. Whether a two-piece or three-piece can, in the form of a tube, aerosol, or bottle: WALLRAM provides the right tools for the manufacturing process. Whether cupper press, body-maker, or necker: WALLRAM tools can be found all over the world.

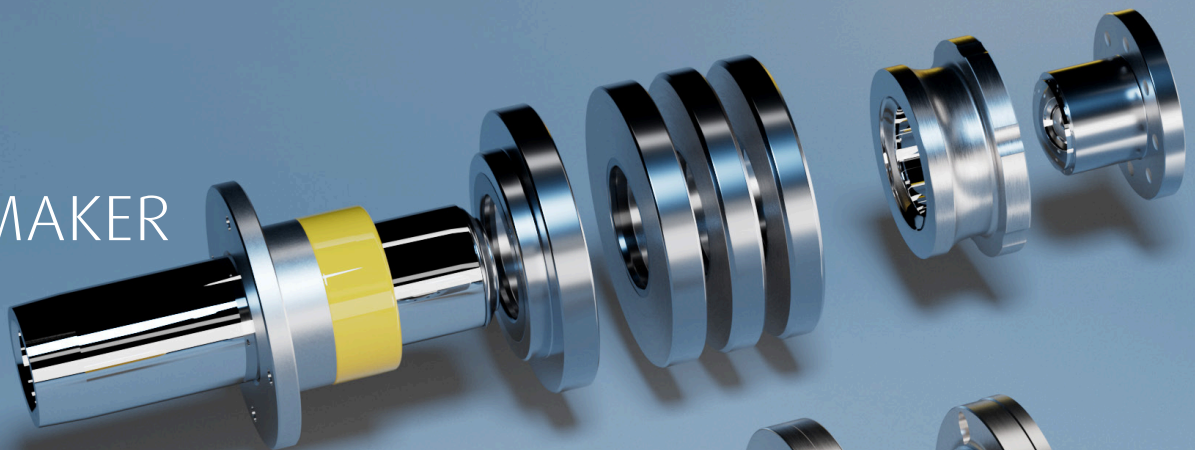
The high quality and wear resistance of WALLRAM tools contribute to a reduction of production costs by extending the durability and reducing scrap.

The comprehensive regrinding service increases the tool life cycle and, thus, supports sustainable and environmentally-friendly production.

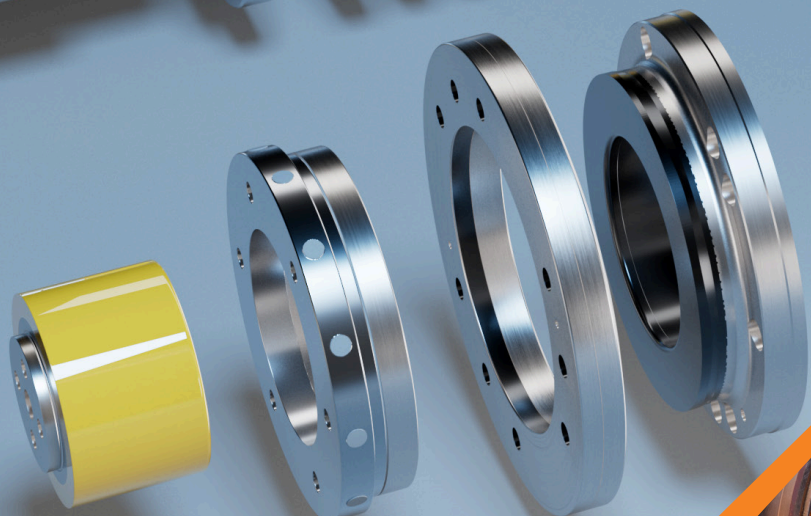
NECKER



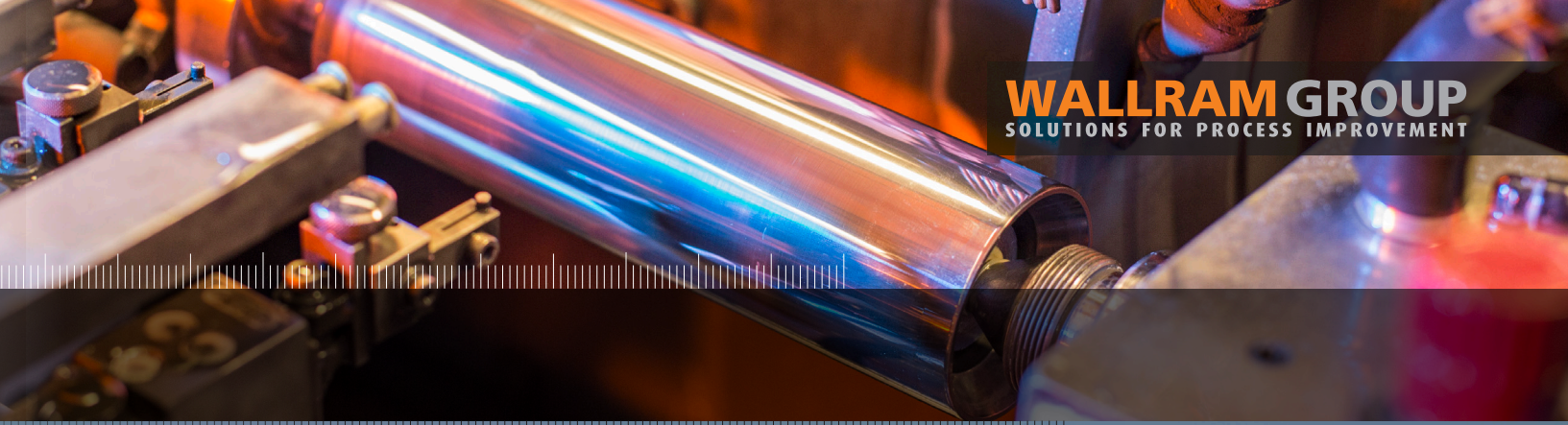
BODYMAKER



CUPPER

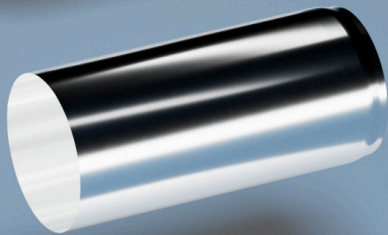
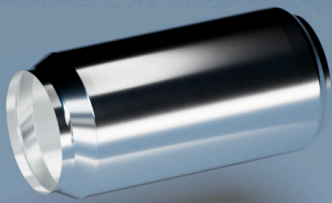






In the necker, the upper part of the can is formed in such a way that allows for the lid to be placed on later.

To prevent errors in the nearly completed product, a sensitive forming process is required. The material is selected at this point: Ceramic is ideal, but certain types of carbide can also be used. WALLRAM has the necessary expertise to make the best selection.



The bodymaker machine is a central unit for the production of cans. It is exposed to extreme physical stress – especially extreme wear and tear. Bodymaker tools made of carbide are best suited for the longest durability. The precision and quality of WALLRAM tools ensure the best product quality at the highest possible production speed.



The cupper is the first station in the can production process. The cup is made from the coil and then further processed in the bodymaker. In order to form the best cup with optimal material use, the highest precision is required. WALLRAM tools can provide such results. The combination of several materials (e.g., carbide and ceramic) and the selection of the best grades is part of WALLRAM's consulting services.





## BODYMAKER

DOME DIE

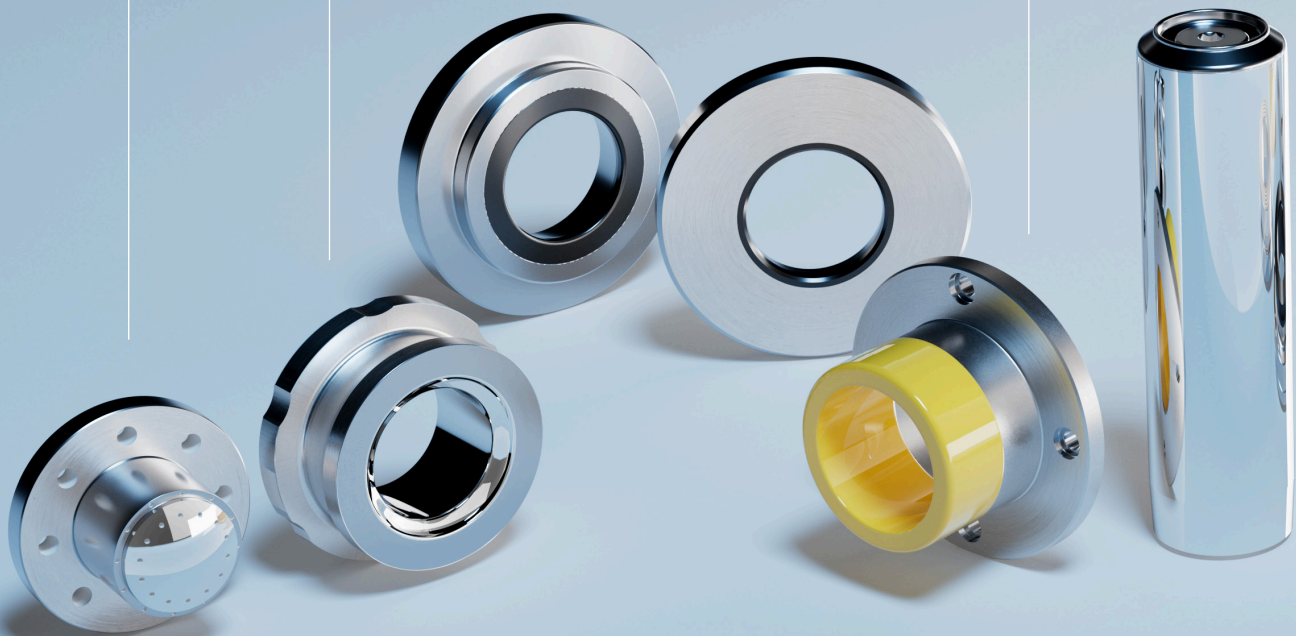
CLAMP RING

REDRAW DIE

IRONING DIE

REDRAW SLEEVE

PUNCH





## CUPPER

## NECKER

BLANK AND  
DRAW DIE

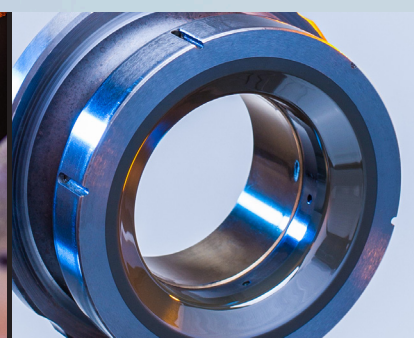
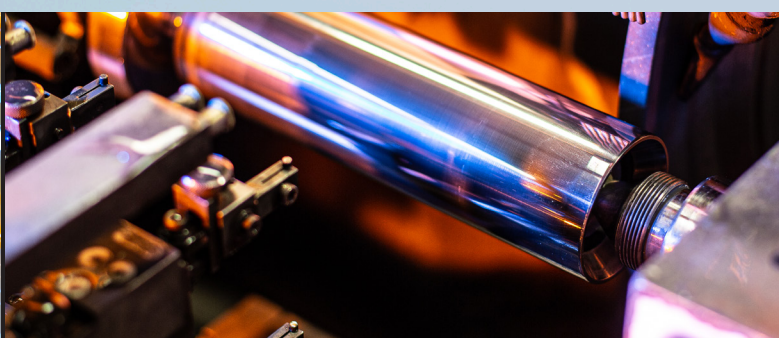
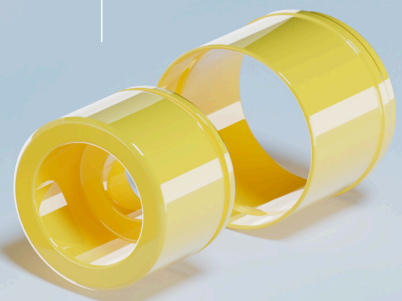
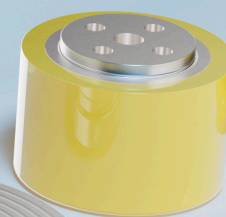
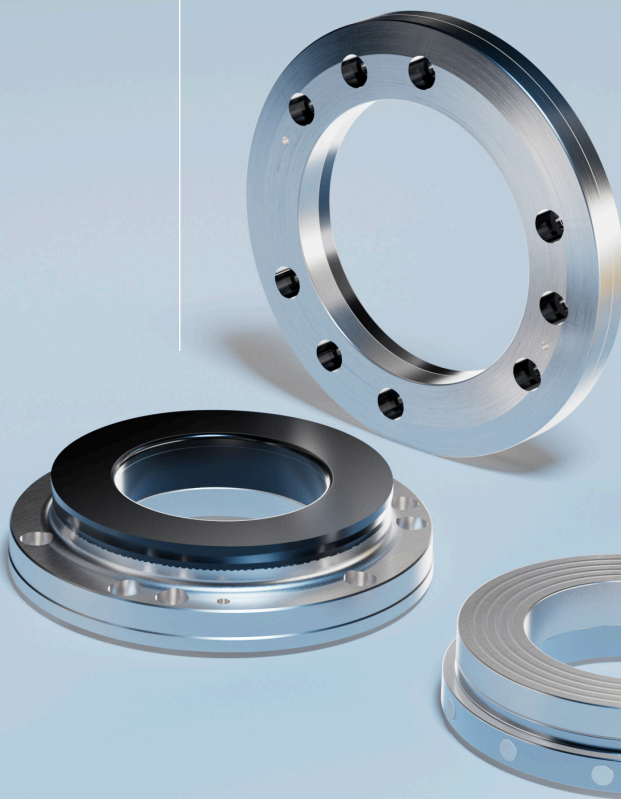
CUT EDGE

DRAW PAD

CUPPER PUNCH

KNOCK OUT

NECKING DIE





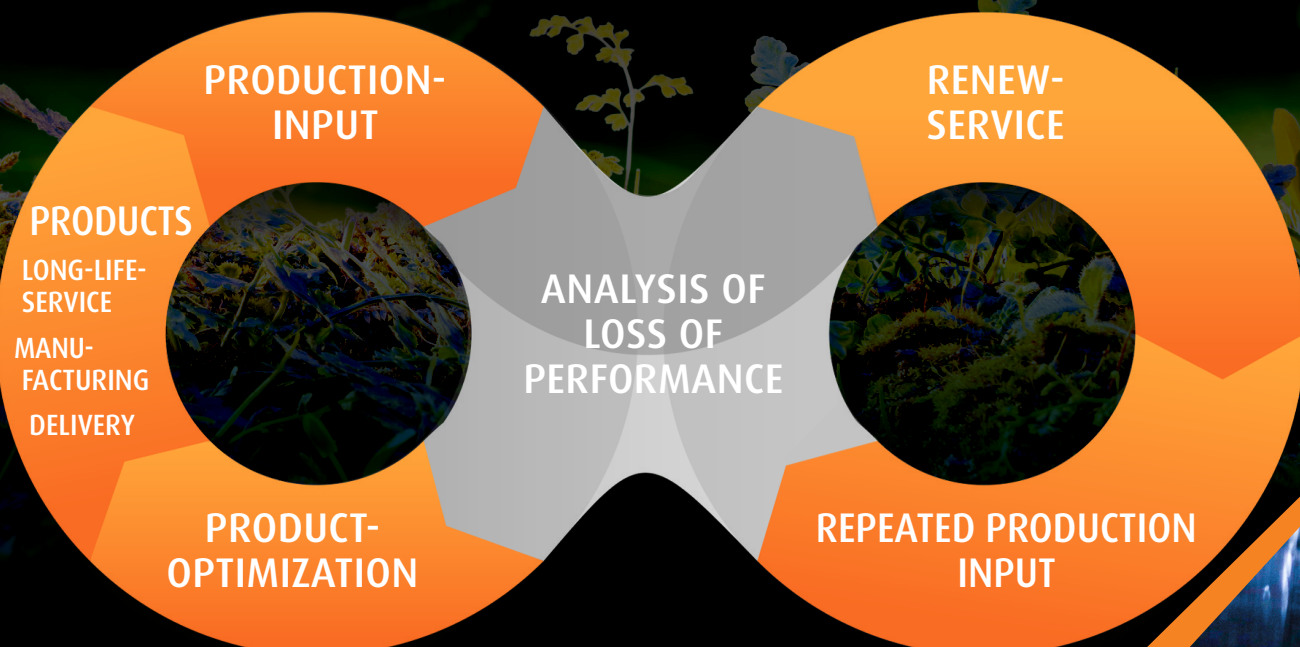
## WALLRAM Renew Service

WALLRAM's "Long-Life Service" facilitates maximum use as early as during the tool production process. This allows for a repeated renew service that is much more than just a repair:

- After the first successful use, performance and wear are analyzed on our premises
- Then, the tools are individually optimized, reworked, renewed, or replaced, as necessary
- High-precision measuring and manufacturing methods allow for regeneration with minimal removal of material. This significantly increases the durability of the tool compared to standard reworking, and the quality corresponds to that of a new tool

### Benefits:

- Total costs for the tool utilization period are reduced to a considerable extent
- Consistent high quality reduces scrap from production, simultaneously resulting in cost and environmental benefits
- Our outstanding durability reduces scrap, thus supporting the sustainable use of resources



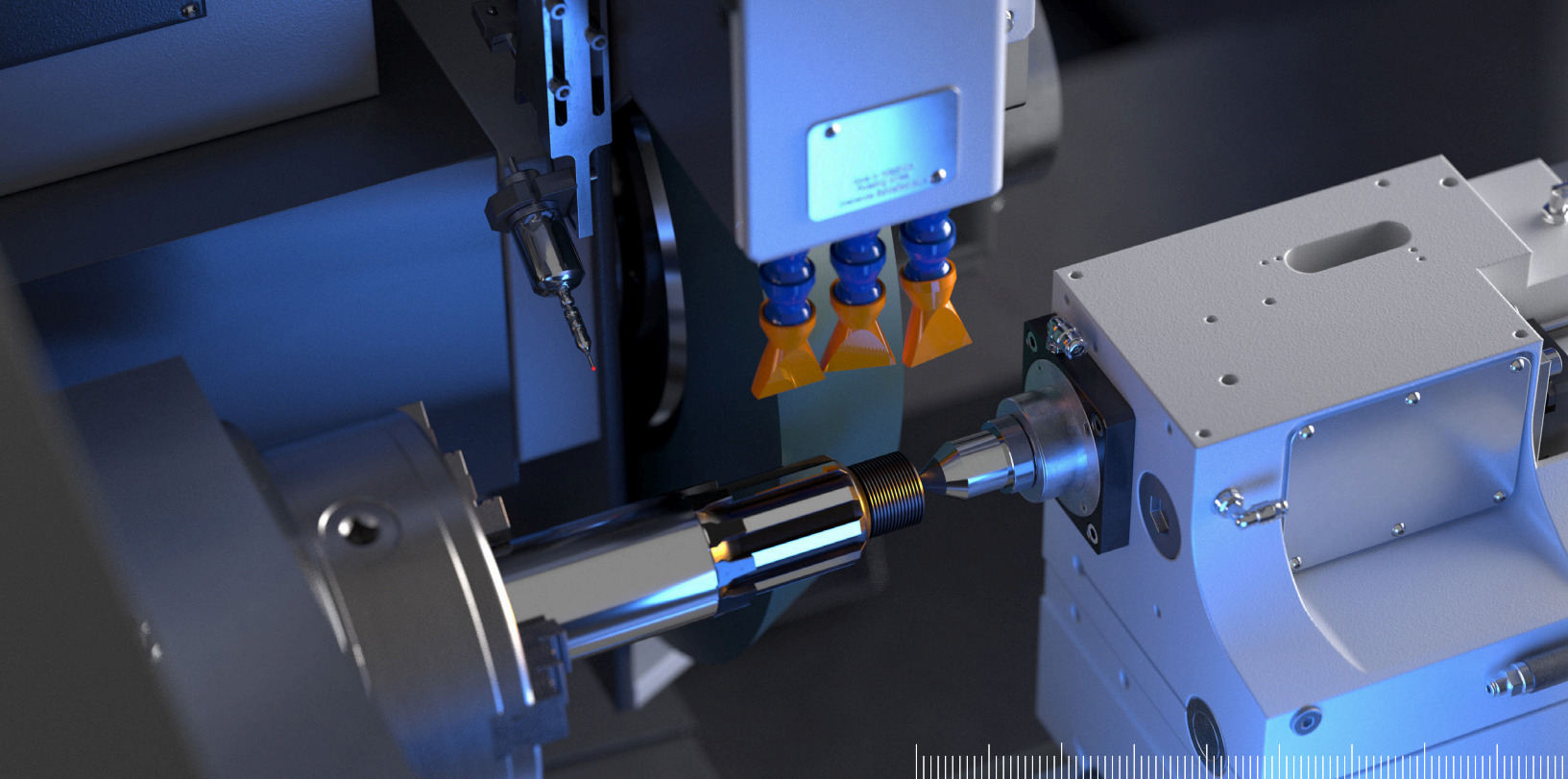


## WALLRAM

We place great emphasis on environmental protection, sustainability, and resource conservation. Sustainability is a pivotal element of our corporate policy:

- High quality and precision of products increase durability and reduce scrap during production for our customers.
- The renew service allows for the maximum use of tools over a considerably extended period of time, and prevents unnecessary waste.
- Waste from our own production has been reduced to a minimum. Waste that arises is mainly recycled. If recycling is not possible, the waste is exclusively disposed of by certified partners in a digitally verifiable procedure.
- We ensure the use of renewable energy and energy-efficient technology.
- The recovered secondary material are an indispensable strategic component of our stable raw materials supply. This material goes into the production loop again to be processed into new varieties.



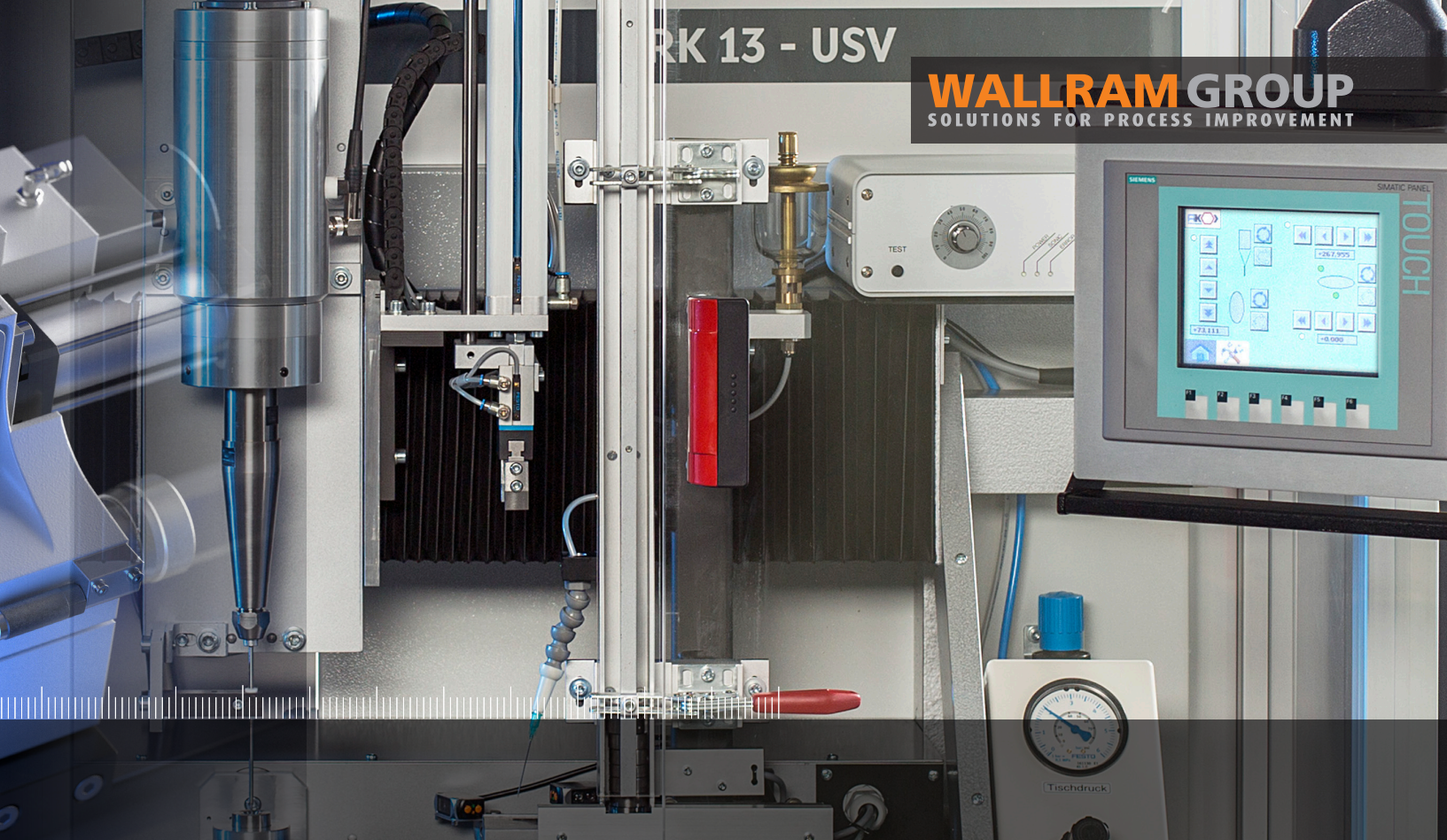


**LIZZINI**<sup>®</sup>  
INTELLIGENT GRINDING

**DieGrind**<sup>®</sup>  
DIE WORKING MACHINES







## WALLRAM GRINDING

### PRECISION GRINDING MACHINES

WALLRAM Grindtec Italy develops and manufactures under the brand name LIZZINI high-precision grinding machines for external and internal cylindrical and profile grinding. Here the company is outstanding for innovative and reliable solutions which bring real added value. The quality, precision and reliability of the products, long-term relationships based on partnership with customers and suppliers, and qualified employees who are passionate about their work are the cornerstones of our success.

### DIE WORKING MACHINES

WALLRAM Grindtec Germany is known for state-of-the-art machines for the processing of drawing dies. Under the brand "RK DieGrind" these are continuously further developed and adapted to customer requirements. Our knowledge of the market and the close cooperation with the customer creates added value.





DEVELOPMENT  
**Productivity**

Vision

Sustainability  
Engagement

Precision

QUALITY **INNOVATION**

Responsibility Customer Support

COMMITMENT





# **WALLRAM GROUP**

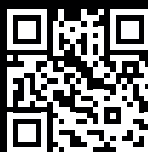
**SOLUTIONS FOR PROCESS IMPROVEMENT**







**WALLRAM GROUP**  
SOLUTIONS FOR PROCESS IMPROVEMENT



[wallram-group.com](http://wallram-group.com)